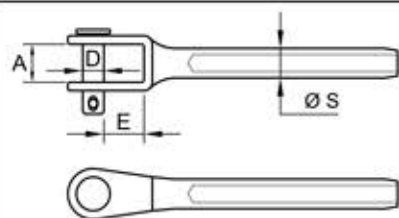
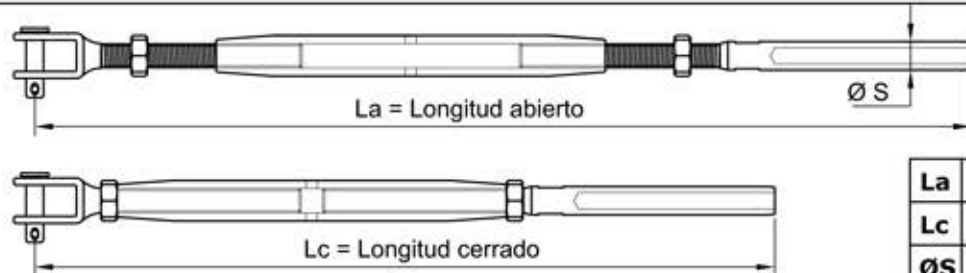


### HORQUILLA FIJA HF 80



<b>A</b>	14
<b>D</b>	12
<b>E</b>	19
<b>ØS</b>	16

### TENSOR HORQUILLA FIJA RHF 80



<b>La</b>	453
<b>Lc</b>	333
<b>ØS</b>	16

### CABLE INOXIDABLE 316

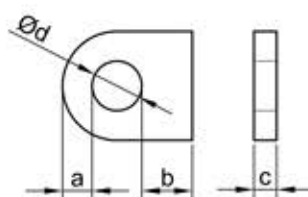


1 x 19



<b>Cable Ø</b>	8
<b>Carga rotura (kg)</b>	5.345
<b>Composición</b>	1x19
<b>Calidad</b>	AISI 316
<b>Límite elástico</b>	70 %

### DIMENSIONADO DEL PUNTO DE ANCLAJE



	Min	Max
<b>a</b>	13	17
<b>b</b>	12	X
<b>c</b>	10	13
<b>d</b>	13	X

IGENA, S.A.

Tel : 93 753 17 11  
Fax : 93 753 31 59

HORQUILLA FIJA  
TENSOR DE HORQUILLA FIJA

HF 80 - RHF 80



Cotas en mm

Plano B04