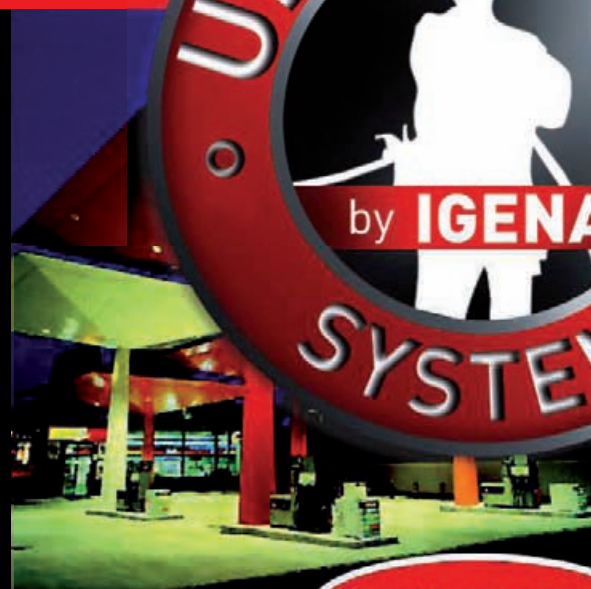


# igena safety

Anchors and safety cables  
Lifelines

UNIVERSAL

SYSTEM



EN 795:2012





**EN 795:2012**

#### IGENA MANUFACTURER

IGENA is the first Spanish manufacturer to be awarded the certificate of conformity for its cables, terminals and safety anchors with standard UNE EN 795:2012 (Protection against falls from a height).

IGENA has been manufacturing stainless steel terminals and cables for all type of applications in industry and construction for more than 30 years. Today, we wish to present our safety cables and anchors from the UNIVERSAL range (also called "lifelines") that have proven to be a product of reference for protection against falls from a height thanks to their high quality and competitive price.

The different materials of the parts we manufacture follow the colour code below:

	<b>STEEL</b>
	<b>STAINLESS STEEL</b>
	<b>ALUMINIUM</b>
	<b>GALVANIZED</b>

## Index

Aluminium and  
stainless steel  
anchors

04



X-50 Fall  
energy  
absorber

09



Anchor point:  
Eyebolts

10



Cables and  
tensioners

13

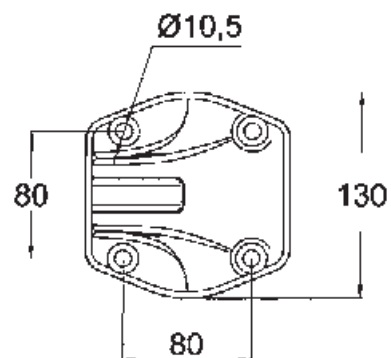


Manual quick-fitting terminal	Mounting plates	Threaded steel plates to be welded	Lifeline models	Lifeline models and Deck special metal roofs	Galvanised and stainless steel posts	Special plates and posts	Screws and accessories	PPE	Work carried out
14	16	22	24	26	32	36	39	41	43
									



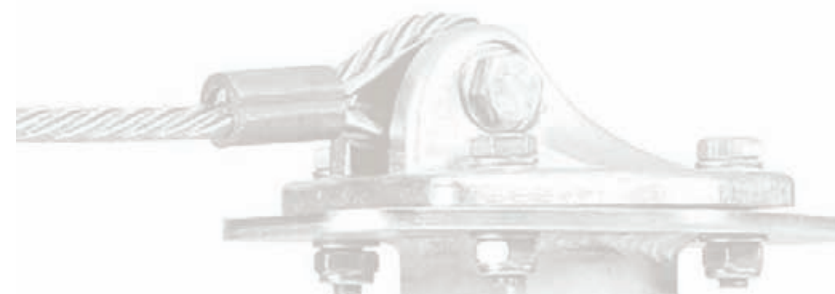
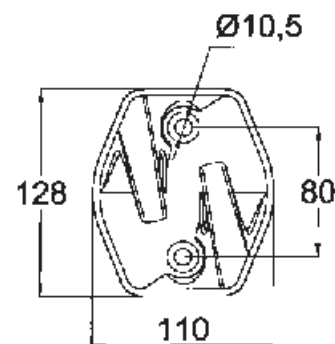
# Aluminium series

## A-10 Aluminium anchor tips



Aluminium anchors for interior or exterior use, manufactured in L2653 alloy with T6 treatment, offering a high level of mechanical and corrosion resistance. Exterior finish with epoxy-polyester paint.

## A-20 Aluminium intermediate anchors



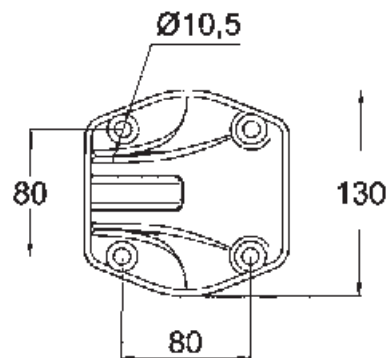
APPROVAL

**EN 795:2012**



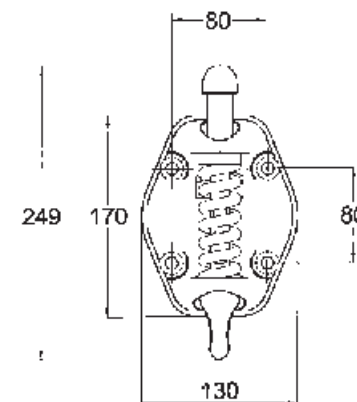
# Stainless steel **series**

## X-10 Stainless steel anchor tips

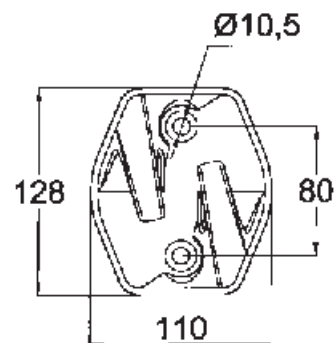


316 stainless steel anchors for exterior or interior use for difficult, corrosive or saline environments. Excellent mechanical and corrosion resistance. Shiny exterior finish.

## X-30 Stainless steel buffer

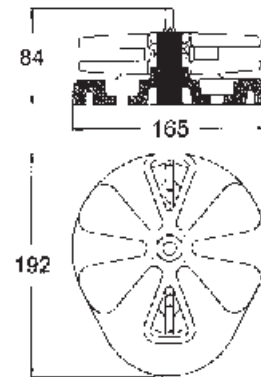


## X-20 Aluminium intermediate anchors



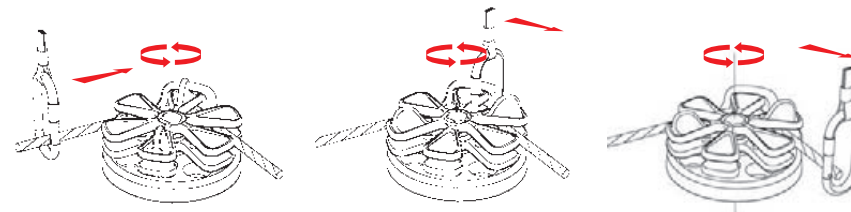
# Angular pulley Series

## CU-10 Curve pulley



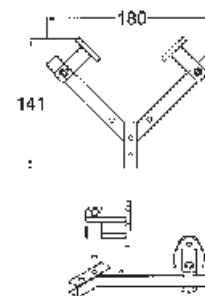
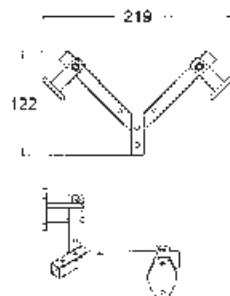
### Application example

- 1 u. CU-10 Curve pulley
- 1 u. FX-10 Standard post
- 4 u. T-10 Screws



Passage of curves without coming loose at any time. Compatible with all types of carabiners. Patent pending.

## SC-10 Support for interior/exterior wall angle



### Application example

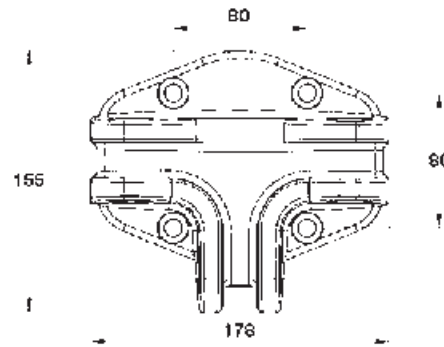
- 1 u. CU-10 Curve pulley
- 1 u. SC-10 Support for interior/exterior wall
- 4 u. T-20 Screws



# Continuous-discontinuous connection anchor

**MULTI**  
application

## A-40 Alu. series

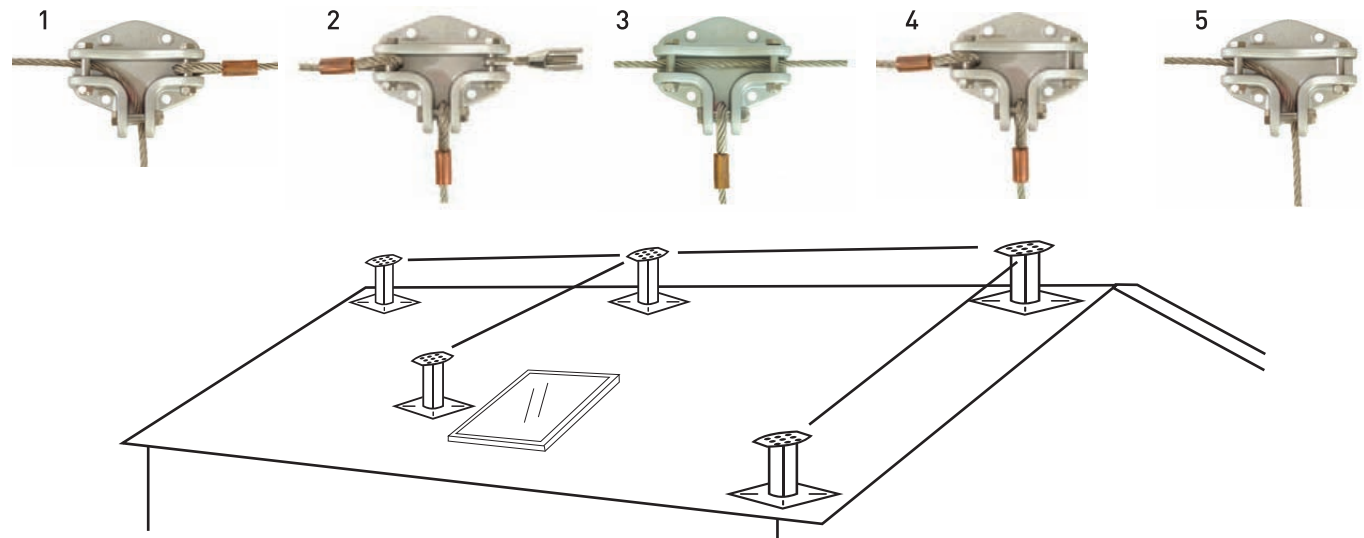


### Application example

- 1 u. A-40 Connection anchor
- 1 u. 9-10 Standard post
- 4 u. T-20 Screws



## X-40 Stainless steel series





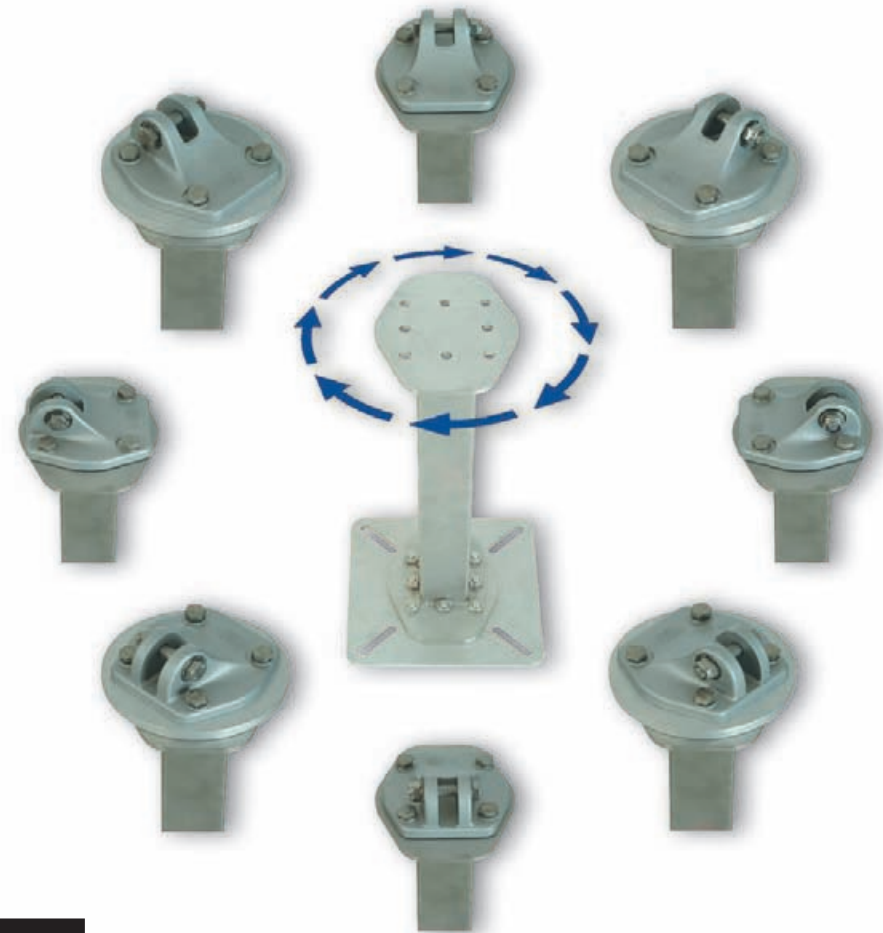
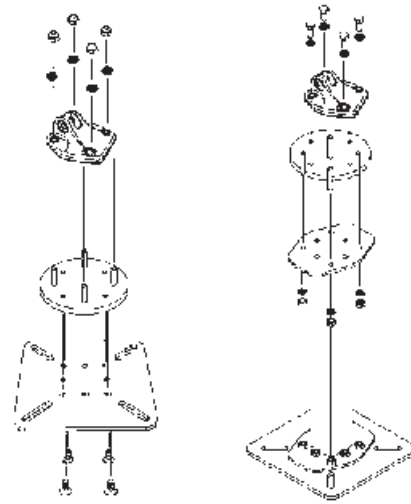
# 360° adjustable adaptor

**MULTI**  
combination

**AN-10** Adjustable adaptor, compatible with **ALL** anchors embedded in posts (P 10-P40, PG 10-PG-40) and plates (BA 10-BA 40)

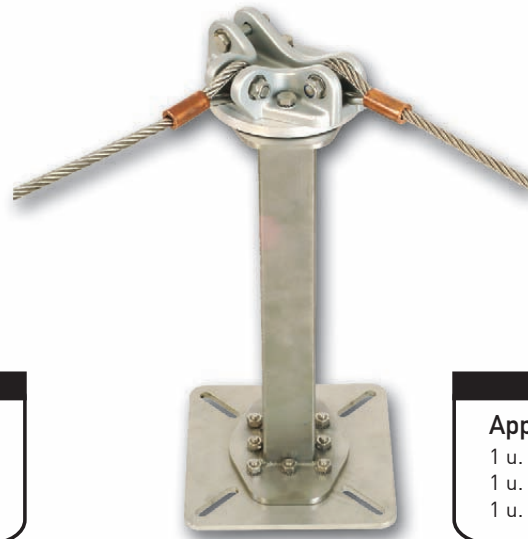


Supplied with all screws for mounting onto posts or plates.



## Application example

- 1 u. **AN-10** Adaptable anchor
- 1 u. **BA-40** Concrete mounting plate
- 1 u. **A-10** Aluminium tipped anchors



## Application example

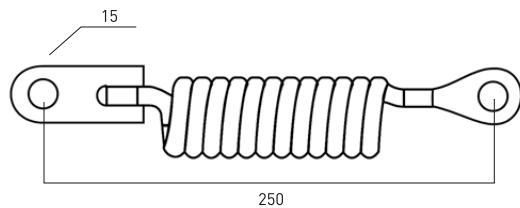
- 1 u. **AN-10** Adaptable anchor
- 1 u. **A-40** Connection anchor
- 1 u. **P-10** Floor mounting post



# Energy **regulator** with fall indicator

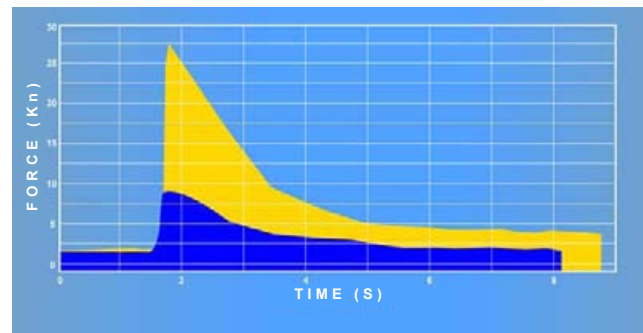
## X-50 STAINLESS STEEL regulator

"Simple perfection that has nothing to hide," would be the best way to describe the new X 50 energy regulator. A challenge that our very own R & D department has managed to overcome with flying colours, a system that has achieved maximum efficiency and simplicity. The X 50 is characterized by its versatility, thanks to the fact that it can be mounted onto any of the anchors from our range and can be used in other fragile construction elements (such as hollow brick walls) or in very high posts which can lead to high torque (lever arm).

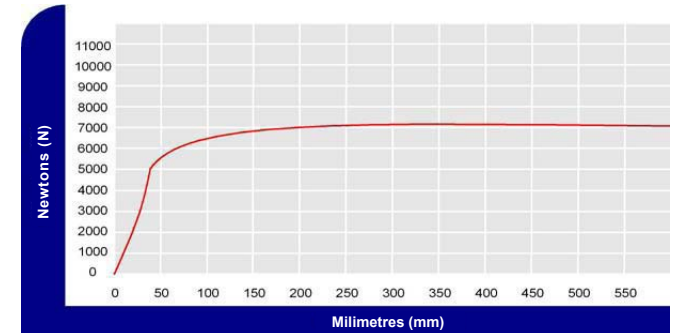


The innovative X 50 system reduces the force applied to the anchors at the end of the lifeline, doing so symmetrically with the application of a steady force. The fact that the X 50 is a fully external system ensures absolute efficiency, eliminating abrasion and friction from other systems with complex internal mechanisms systems that are difficult to predict.

Comparison of dynamic drop test with X-50 and without absorber

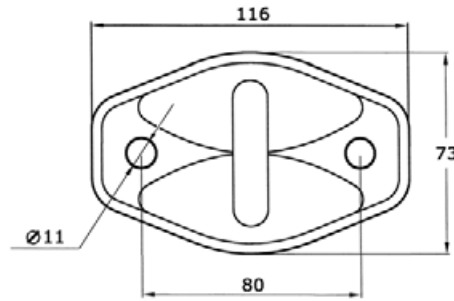


Maximum tension in the lifeline with the X-50 absorber



# Anchor points: Eyebolts

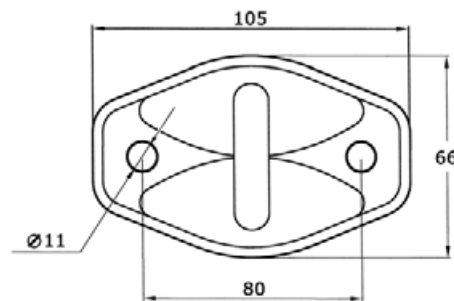
## FA-10 Aluminium mounting eyebolts



L-2653 alloy aluminium eyebolt with T6 treatment, offering a high level of mechanical and corrosion resistance. Exterior finish with highly resistant epoxy-polyester paint. M-10 double mounting point. Safety at the best price. Approved by standard 795 A. Also comes in blister form.



## FX-10 Stainless steel mounting eyebolts



316 stainless steel eyebolt for tough, corrosive, saline environments and two M-10 mounting points that offer greater safety for support and mounting. Its modern design and perfect finish enables it to fit in with the most modern interiors. Approved by standard 795 A. Also comes in blister form.



Details of **FX10**  
painted in RAL 1003 for  
ECO100-Alstom Ecotecnia

# Anchor points: Eyebolts

## SCOPE OF APPLICATION

Can be used in all types of interior and exterior constructions, in risk areas or on any slope greater than two meters.

It can be used in any environment with temperatures from -20 ° C to 50 ° C.

Adapts to all types of roofs: roof tiles, slate, fibre, metal, fibre cement etc., and all kinds of structures, metal, wood, concrete.

Eyebolts available in all colours from the RAL menu.

## FUNCTIONS

All FA 10 and FX 10 mounting devices for protection against falls are designed for personal safety to offer safety/prevent falls from a height.

With this in mind, they must be exclusively used for this purpose, with use of PPE personal protective equipment such as a carabiner, leather jacket, harness, strap, line reel, etc. at all times.

For all types of buildings, single-family dwellings (maintenance-installation of TV aerials, satellites, fireplaces, repairs, roofs, etc.), offices and industry (maintenance-installation of industrial equipment, window cleaners, etc.)

## INSTALLATION / POSITIONING

The installation and installation method of the anchor must be chosen according to the work or the inspections to be carried out.

There should be no obstacles within 3 meters if at all possible that could harm anyone that may suffer a fall in the event of rolling.

## 175 OR HIGHER QUALITY CONCRETE WALLS

FA-10 and FX-10: with M-10 stainless steel metal bolts ref. T-200 (see page 37). Position at least 80 mm from the edge of the concrete.

We recommend the use of REF BC-10, BC-20 or BG-50 eyebolt base plate (see pages 20 and 21) for less resistant walls with 2 u. chemical mortar blister ref. T-500 or M-12 metal bolt ref. T-300 (see page 37).

For other specific cases, check with your mounting device distributor about what is most suitable according to the point where they are to be anchored. We have a range of bolt models according to wall type.

## METAL ELEMENTS OR STRUCTURES

With stainless steel screws quality 304 or 316 (A2-70 A4-70) bolted or screwed into the structure. Use DIN 933 o DIN 931 M-10 screws with the corresponding DIN 125 washers and DIN 985 nuts or

by welding using PS-14 or PS-16 plates eyebolt base plates (see pages 22 and 23), with T-30 screws.

## MAINTENANCE

IGENA FA 10 and FX 10 mounting devices for protection against falls do not require any maintenance. However, we recommend carrying out a visual inspection once a year to ensure that they are in proper condition. This inspection should be carried out by a skilled person, rather than the user.



Andorra roof



Glass cleaning in accordance with  
CTE-RD 314/2006



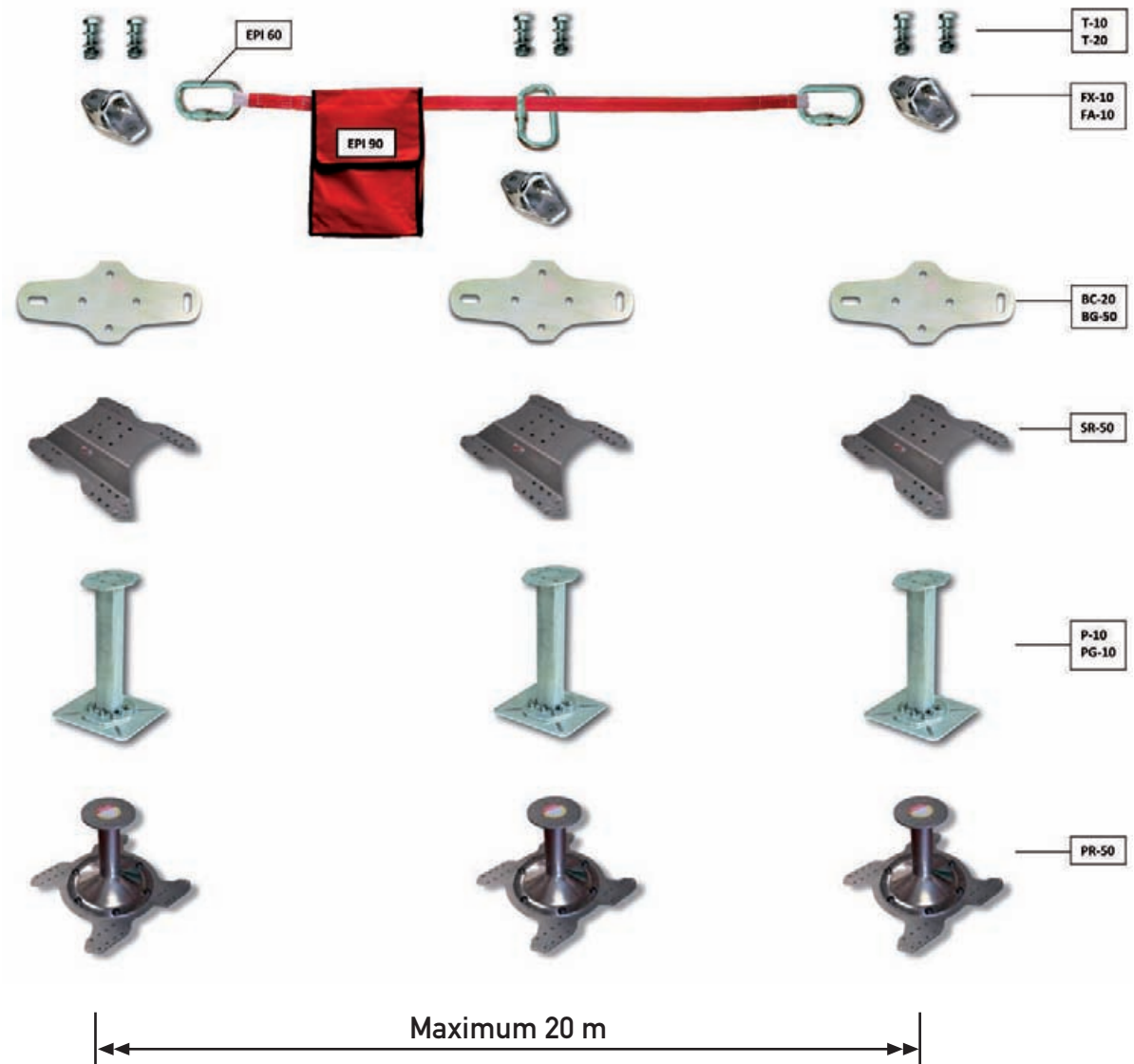
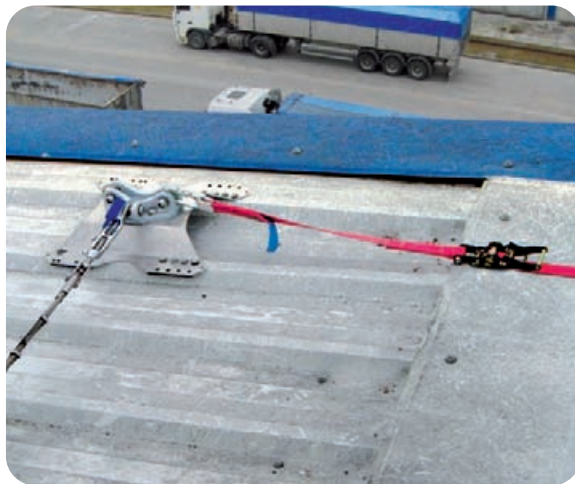
# Temporary textile life lines

## Assembly of EPI-90 temporary life lines and FA-10 /FX-10 anchor points

As the IGENA FA 10 and FX 10 mounting devices for protection against falls are approved by standard UNE 795 A, they can be used as mounting points at the tip and in the middle of the temporary textile lifelines according to UNE 795 B.

This type of assembly is used for temporary applications. Whenever this type of temporary term lifeline is installed, the instructions and configuration of the textile line manufacturer must be followed.

For maximum workability, these eyebolts can also be mounted onto all types of posts and stands.





# Cables and tensioners

**C-08** Stainless steel cables  
Ø 8 mm 7x19+0

**CG-18** Galvanised cable  
Ø 8 mm 7x19+0



**C-10** Stainless steel cable  
316 Ø 10 mm 7x19+0

**CG-15** Galvanised cable  
Ø 10 mm 7x19+0

**C-20** Copper cap pressed  
terminal Ø 10

**C-28** Copper cap pressed  
terminal Ø 8



**C-30** Set of 3 cable  
ties + closed stainless steel  
cable guard Ø 10



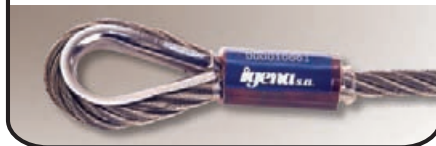
**R-10** Eyelet-pin open  
box tensioner  
(secured with A-40 or X-40)



**R-15** Eyelet-pin open  
box tensioner  
(secured with A-40 or X-40)



All our lifelines come  
with references.  
Cables are marked and  
sealed with the same  
numbering.



**R-20** Eyelet-pin open  
box tensioner  
(secured with X-30)



**C-70** Colour protector  
Final cable Ø 10

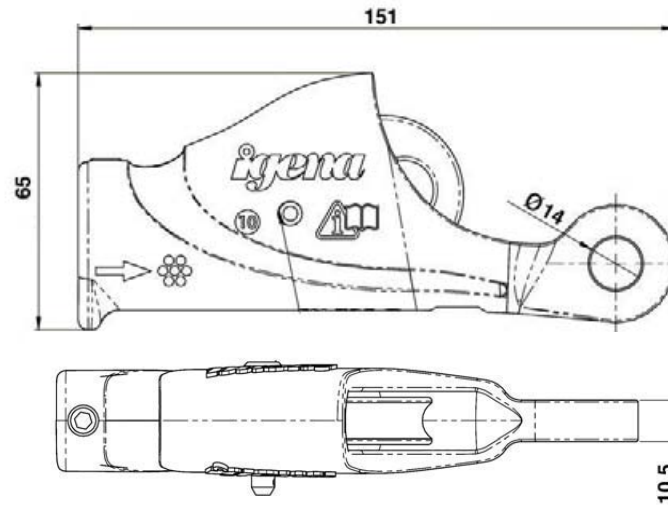
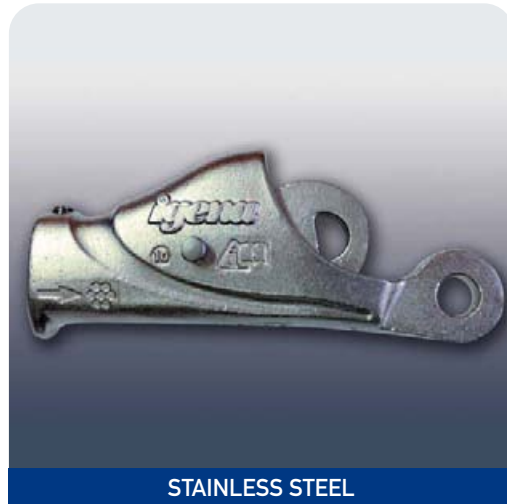
**C-78** Colour protector  
Final cable Ø 8



# Manual quick-fitting terminal **TERMINAL**

KC-80

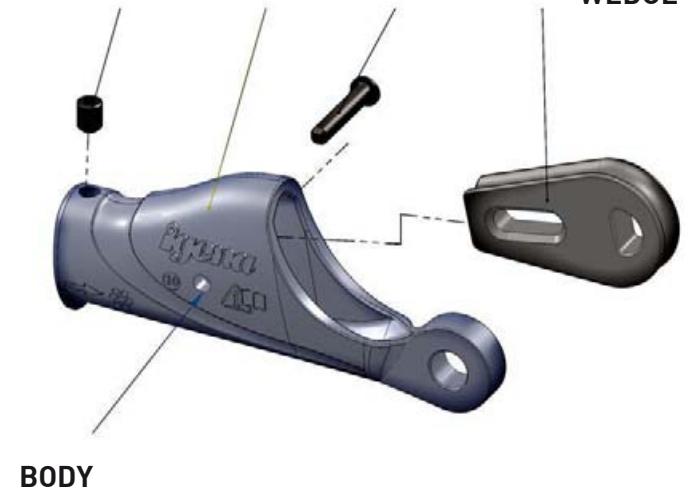
KC-100 Cable terminal for universal lifeline



STUD

PIN

WEDGE



The IGEMA R & D department has once again outdone itself with the design of a **new concept in lifeline terminals**, with a terminal that is the FASTEST, EASIEST and SAFEST on the market.

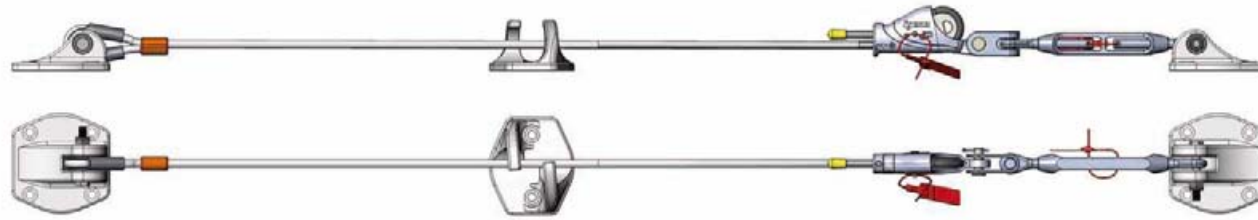
- **FAST** as it can be assembled in 30 seconds.
- **EASY** as it does not require any tools for its installation.
- **SAFE** due to its fool proof assembly, allowing you to easily check that the terminal is in good conditions with a visual inspection.

This terminal has been designed with installers and users in mind, and is incredibly easy to install and can be checked with a simple visual inspection to ensure it is in good condition. Once it is installed, it is sealed to prevent tampering.

This terminal does not require load tests to verify its resistance, thanks to its design, where the terminal resistance increases in line with the line tension, leading to the same cable possessing greater resistance.

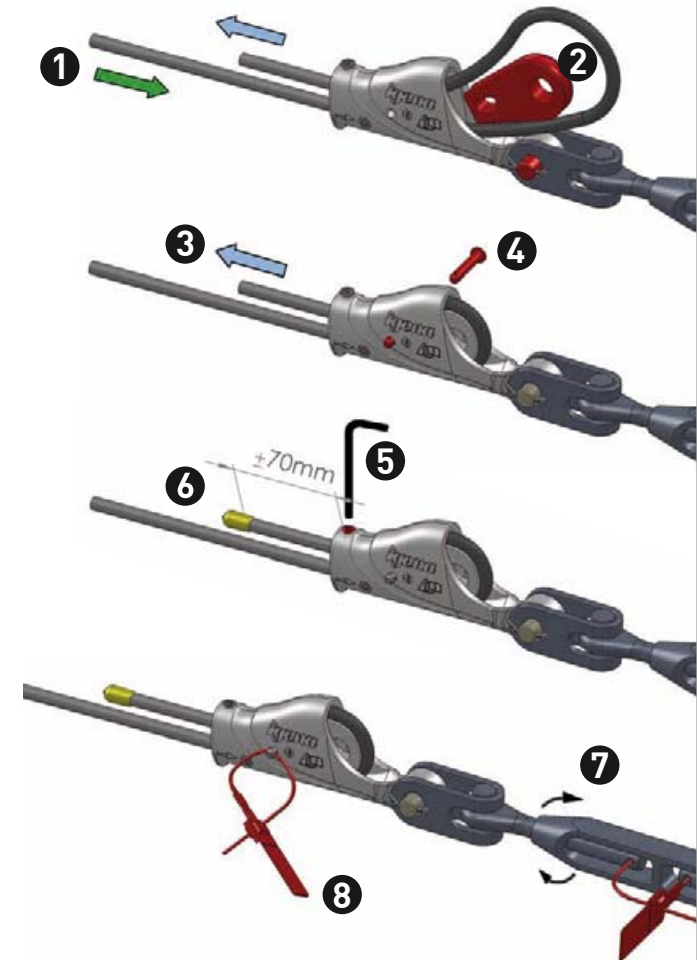
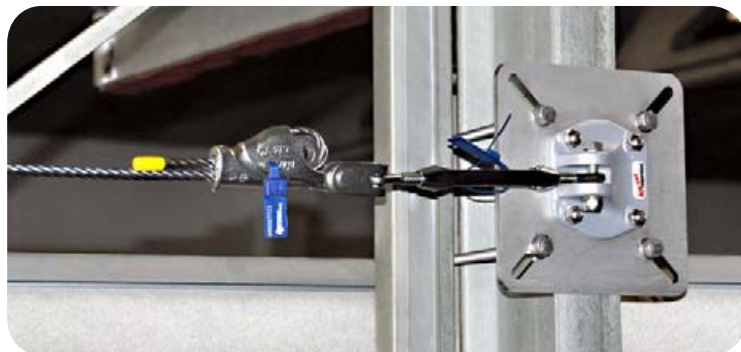
**AVAILABLE for Ø 8 mm cable diameter (Ref. KC-80) and Ø 10 cable (Ref. KC-100)**

# Manual quick-fitting terminal **TERMINAL**



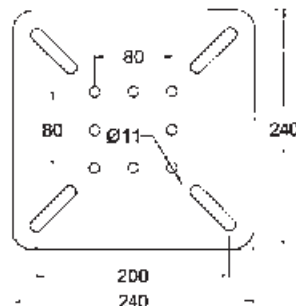
## Assembly instructions KC-80 | KC-100

- 1 Insert the cable through the lower hole and out of the upper hole.
- 2 Insert the wedge into its housing.
- 3 Manually tighten the cable.
- 4 Position the pin.
- 5 Tighten the socket screw.
- 6 Cut the excess cable and position the PVC protector.
- 7 Tighten the line (with the tensioner).
- 8 Place seals on the tensioner and the terminal.



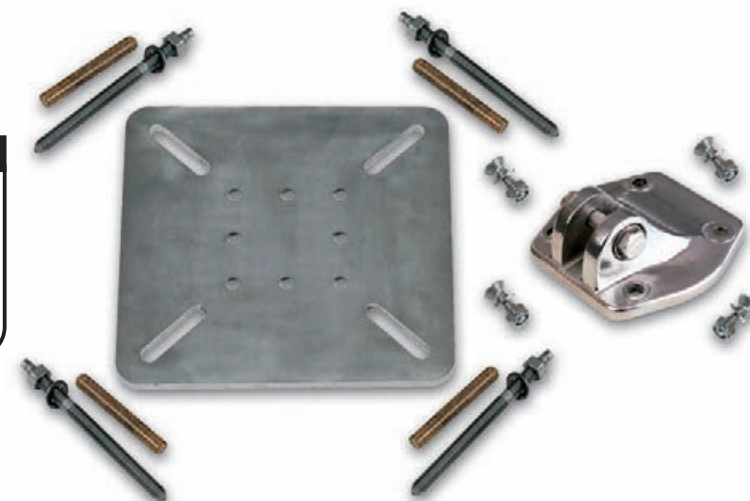
# Anchor mounting stainless steel plates

## BA-10 Stainless steel plate mounted onto the wall and floor

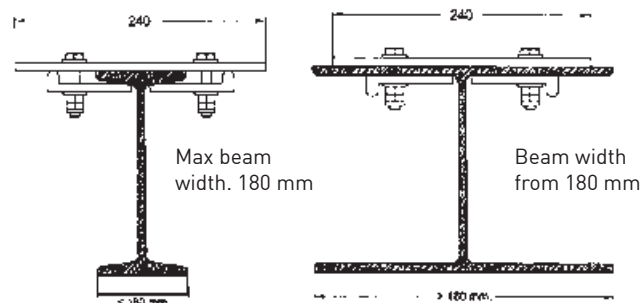


### Application example

- 1 u. BG-10 Standard plate
- 1 u. X-10 Final stainless steel anchor
- 4 u. T-10 Screw
- 4 u. T-100 12 metric chemical bolt

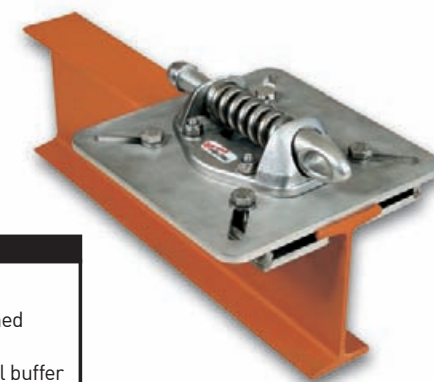


## BA-20 Stainless steel plate mounted onto a beam with tabs



### Application example

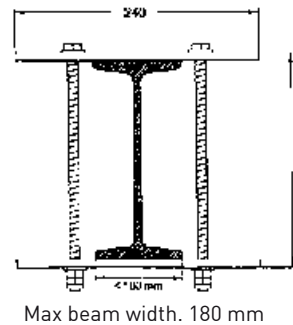
- 1 u. BA-20 Beam fixing plate, attached using flanges
- 1 u. X-30 Anchor with stainless steel buffer
- 4 u. T-10 Screw





# Anchor mounting stainless steel plates

## BA-30 Stainless steel mounting plate in beam with bracket

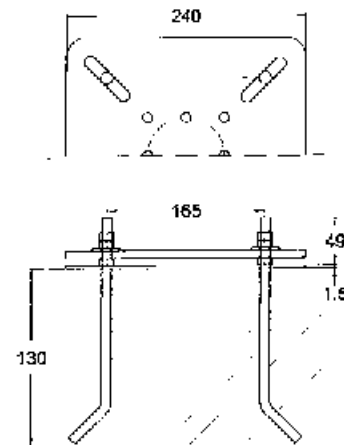


### Application example

- 1 u. BA-30 bracket plate attachment
- 1 u. A-10 Alu. tip anchor
- 4 u. T-10 Screw

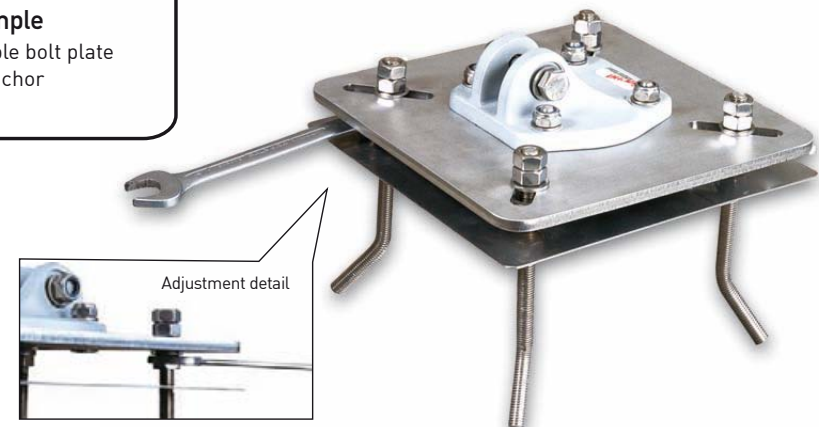


## BA-40 Stainless steel plate mounted to the floor using adjustable bolts to insert into concrete



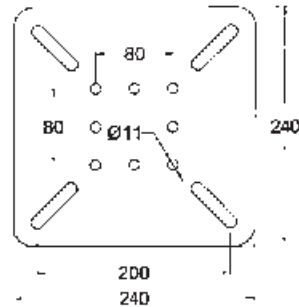
### Application example

- 1 u. BA-40 Adjustable bolt plate
- 1 u. A-10 Alu. tip anchor
- 4 u. T-10 Screw



# Galvanized plates mounted onto walls and floors

## BG-10 Galvanized plates mounted onto walls and floors

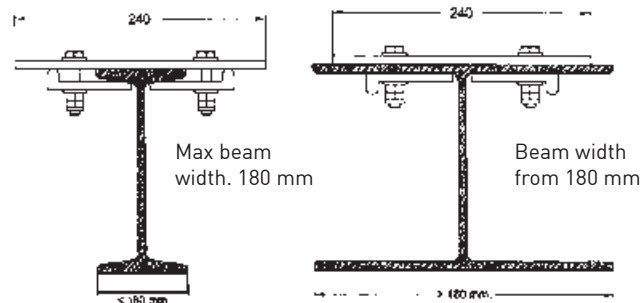


### Application example

- 1 u. BG-10 Standard plate
- 1 u. A-40 Alu. tip anchor
- 4 u. T-10 Screw
- 4 u. T-300 Metric12 stainless steel metal bolt

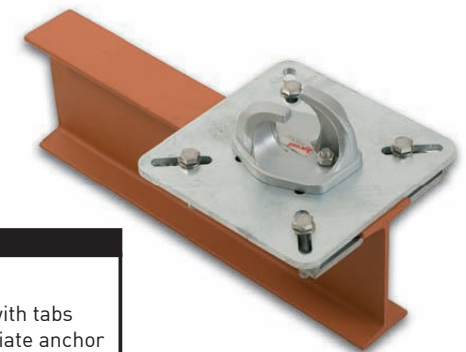


## BG-20 Galvanised plate mounted onto a beam with tabs



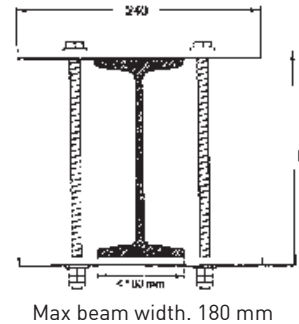
### Application example

- 1 u. BG-20 Mounting of plate with tabs
- 1 u. A-20 Aluminium intermediate anchor
- 2 u. T-10 Screw



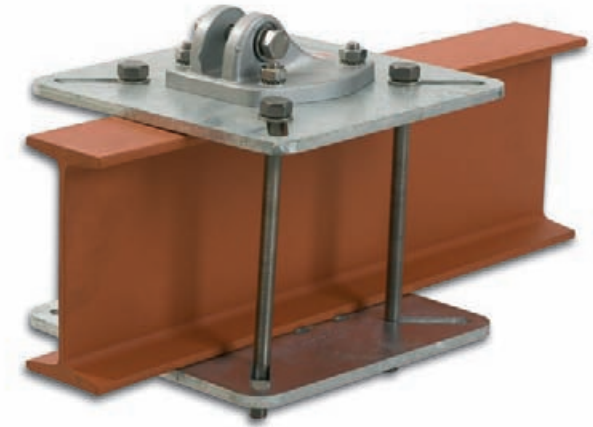
# Galvanized plates mounted onto walls and floors

## BG-30 Galvanized plates mounted onto beam with bracket

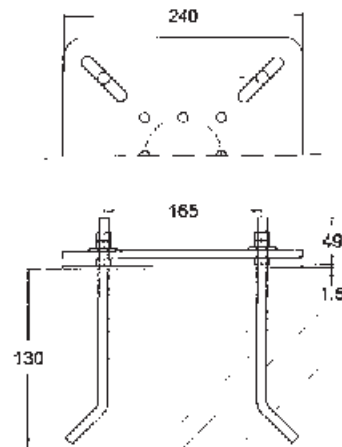


### Application example

- 1 u. BG-30 bracket mounting plate
- 1 u. A-10 Alu. tip anchor
- 4 u. T-10 Screw



## BG-40 Galvanized plate mounted to the floor using adjustable bolts inserted into concrete



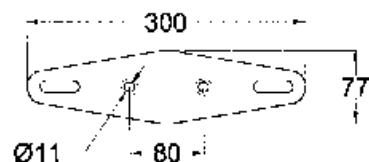
### Application example

- 1 u. BG-40 Adjustable bolt plate
- 1 u. CU-10 Curve pulley
- 4 u. T-35 Screw



# Intermediate anchors/ eyebolt mounted stainless steel plates

## BC-10 8mm stainless steel base plate for eyebolts



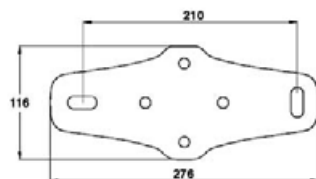
Manufactured in 8 mm stainless steel.  
**COMPATIBLE** with FA-10 and FX-10-eyebolts.

### Application example

- 1 u. BC-10 Stainless steel base plate
- 1 u. FX-10 Stainless steel mounting eyebolt
- 2 u. T-10 Screw



## BC-20 8mm stainless steel base plate mounting horizontal / vertical eyebolts



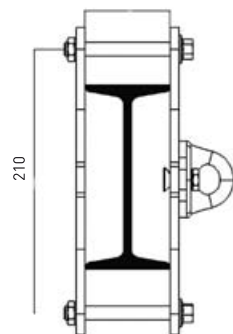
Manufactured with 8 mm stainless steel Allows for horizontal and vertical mounting. Its inverted, elongated augers allow for easy installation and alignment.  
**COMPATIBLE** with FA-10 and FX-10 eyebolts as well as wall reinforcement for installation of intermediate anchors A-20 or X-20 and SC-10 curve pulley.

### Application example

- Vertical position with FX-10
- Vertical position with FA-10

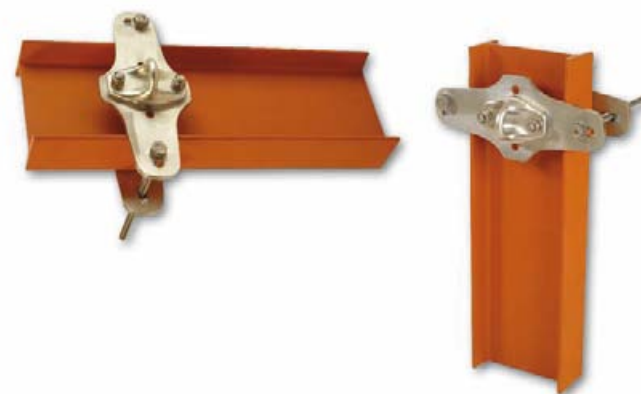


## BC-30 Stainless steel mounting eyebolts with use of bracket



### Application example

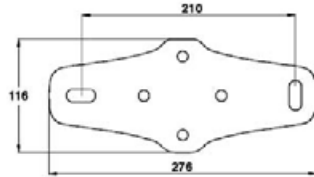
- 1 u. BC-30
- 1 u. FX-10
- 2 u. T-10





# Intermediate anchors/ eyebolt mounting galvanised plates

## BG-50 8 mm galvanized base plate mounting horizontal / vertical eyebolts



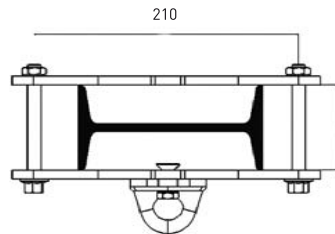
Manufactured with 8 mm galvanised  
Allows for horizontal and vertical  
positioning.  
Its inverted elongated augers allow for  
easy installation and alignment.  
**COMPATIBLE** with FA-10 and FX-10  
eyebolts as well as wall reinforcement  
for installation of intermediate anchors  
A-20 or X-20 and SC-10 curve pulley.

### Application example

1 u. BG-50  
1 u. X-20  
2 u. T-10 Screw  
2 u. T-300



## BG-60 Galvanised plate mounting eyebolts with use of bracket



Maximum beam width 210 mm.  
The length of the mounting bolts will be  
defined according to the height of beam L.

### Application example

2 u. BG-60  
2 u. FX-10  
4 u. T-10

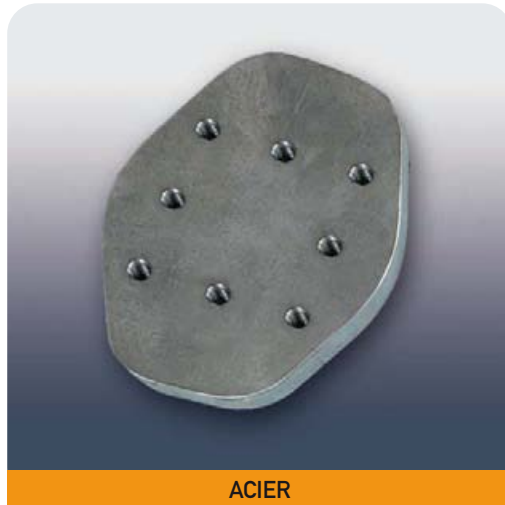
## Special plates



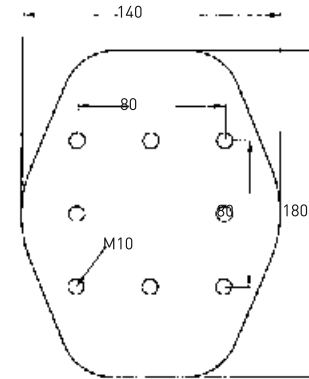
Detail of installation of  
safety eyebolts in a production line



## PS-14 Threaded plate for anchors to be welded in steel structures



Manufactured in 12 mm ST 37 steel  
**COMPATIBLE** with **ALL** anchors in any position with 8 M-10 threaded augers.  
Also attaches to stainless steel column post P-350 and P-500



Detail of PS14 mounting plates on metal structure



### Example of application M 18

- 1 u. **PS-14** Plate to be welded
- 1 u. **X-10** Stainless steel anchor tip
- 4 u. **T-30** Screw



### Example of application M 19

- 1 u. **PS-14** Plate to be welded
- 1 u. **P-500** Stainless steel column height 500 mm
- 8 u. **T-35** Screw



Detail of PS14 mounting plates on overhead crane



Detail of mounting column post on overhead crane

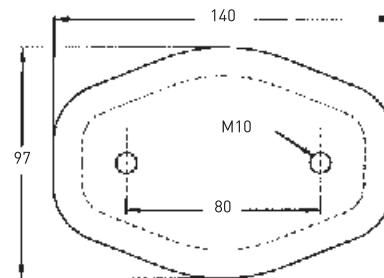
Detail of mounting column post on metal structure

# Stainless steel **plates** for eyebolts

## **PS-16** Threaded plate for eyebolts to be welded in metal structures



Manufactured in 12 mm ST 37 steel.  
**COMPATIBLE** with **FA-10** and **FX-10** eyebolts and **A-20** and **X-20** intermediate anchors via two M-10 threaded augers.



### Application example

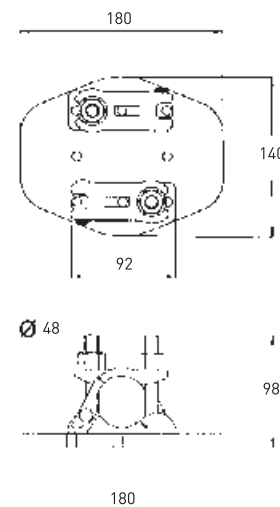
- 1 u. **PS-16** Threaded plate for eyebolts
- 1 u. **FX-10** ou **FA-10** aluminium/stainless steel mounting
- 2 u. **T-30** Screw



## **AD-10** Mounting in scaffolding



Manufactured in 12 mm ST 37 steel.  
**COMPATIBLE** with all anchors installed in any position via 8 M-10 threaded augers.

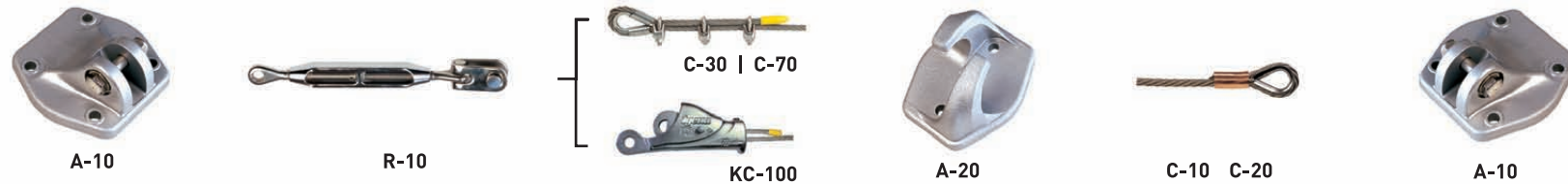


# High level of safety

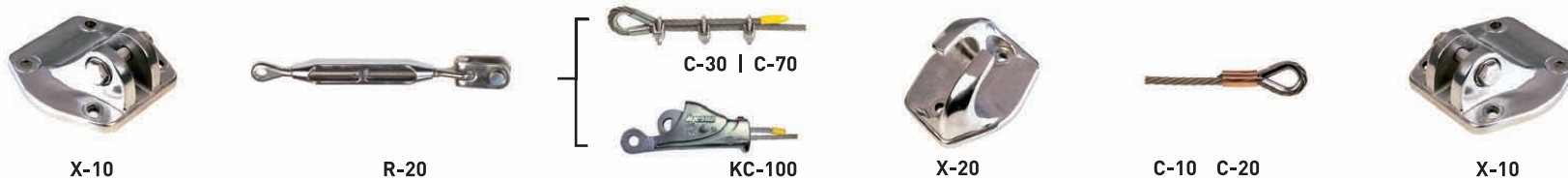
**MULTI**  
combination

- Allows the passage of intermediate points without having to unfasten anything at any time.
- Compatible with any type of safety harness without the need to use any special sliding parts or carts.
- Simplicity and saving (lower cost)

## LVA Lifeline. BUFFERLESS ALUMINIUM



## LVI Lifeline. BUFFERLESS ALUMINIUM



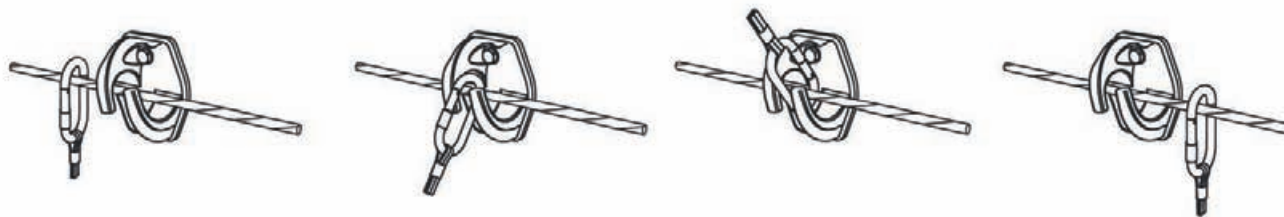
## LVS Lifelines. MIXED



## LVM Lifeline. STAINLESS STEEL WITH BUFFER







## LVG (alugal) Lifeline BUFFERLESS ALUMINIUM WITH GALVANISED CABLE



A-10



R-10



C-30 | C-70

KC-100



A-20



CG-15 | C-20



A-10

## L8AX Lifeline. ALUMINIUM WITH X-50 ENERGY REGULATOR



A-10



R-10



KC-80



A-20



C-08 | C-28



X-50



A-10

## L8IX Lifeline. STAINLESS STEEL WITH X-50 ENERGY REGULATOR



X-10



R-10



KC-80



X-20



C-08 | C-28



X-50



X-10

## L8GX Lifeline. GALVANISED CABLE WITH X-50 ENERGY REGULATOR



A-10



R-10



KC-80



A-20



CG-18 | C-28



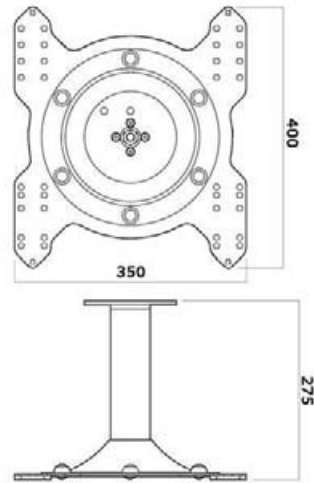
X-50



A-10

# Mounting for metal roofs

## PR-50 Stainless steel post mounting in metal roof



### Application example

- 1 u. PR-50 Rivet post
- 1 u. X-10 Stainless steel external anchor
- 4 u. T-20 Screws
- 8 u. RE-50 Rivets (for metal sheet >0,6 mm)



## PR 50 THE SECURITY OF POSSESSING THE BEST POST...

### APPROVED BY STANDARD UNE 795 C (suitable for lifelines).

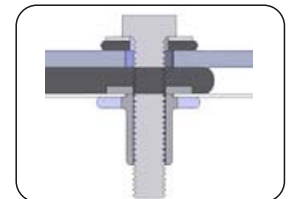
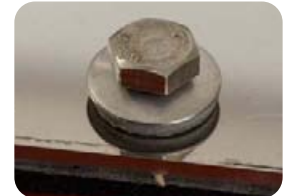
There are currently very few manufacturers have been able to get past this type C standard with demonstrable trials. This is because only posts with standard UNE 795 A (involving fewer requirements, suitable for anchor points only) are being marketed and that are subsequently positioned/modified at the installer's risk. Tests conducted by the prestigious LGAI – Applus laboratory with No. 08/31700289, clearly demonstrate that our entire new range far exceeds the minimum requirements of standard 795 C (suitable for lifelines).

### THANKS TO ITS DOUBLE WATERPROOFING SYSTEM.

The PR50 post removes any risk of leaks or drips as it comes with sealing protection for high density EPDM roofs that prevents contact between the two metal surfaces, protecting said roofing. We have also added HX 10021 sealing washers to all mountings.

### THANKS TO OUR SAFER MOUNTING SYSTEM.

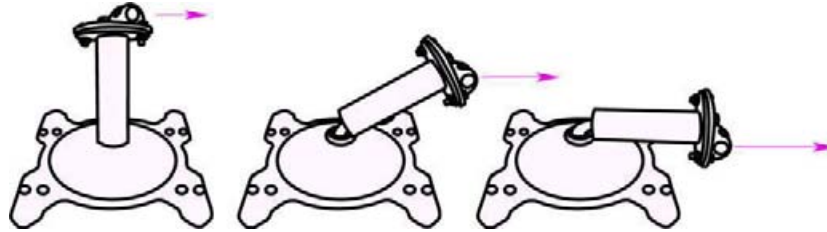
Mounted with 8 threaded "flower" rivets, with mechanical resistance 4.5 times greater than normal self-tapping screws (which damage roofs and require multiple perforations to be made).



## THANKS TO ITS NEW FALL ENERGY RECOVERY CONCEPT.

Combining its habitability and energy absorption system, all the kinetic energy from a fall is transformed into deformation work resulting in a gradual braking, thus eliminating impact. The added height of the PR50 post is another advantage (greater passage comfort and ability to overcome structural elements).

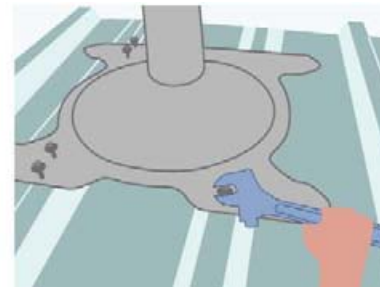
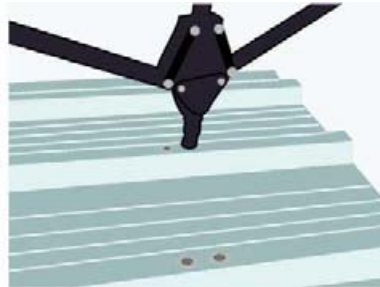
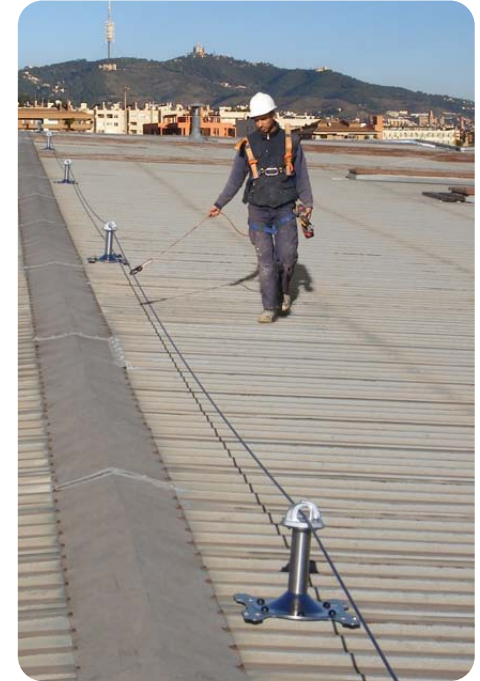
Its conical shape allows absorption of symmetrical shaped forces up to 360°, unlike other pyramidal shapes with straight profiles.



## THANKS TO ITS VERSATILITY AND EASY INSTALLATION.

The original configuration of the augers at the base allows the installer to install it in all panel and metal sheet formats (over 200 listed). With just 8 mounting screws on the panels >0.5 mm, allows a great saving in assembly time. Together with simple line post design but without sacrificing style and shapes that are easy on the eye, the high quality materials used (100% stainless steel), very competitive price and delivery terms means that our posts are considered the BEST POST on the market.

A separation of 10 to 15 metres is recommended between PR 50 (opening) posts.



### TECHNICAL INFORMATION

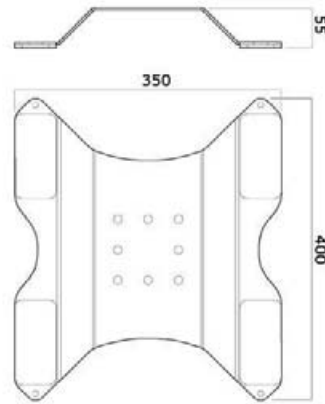
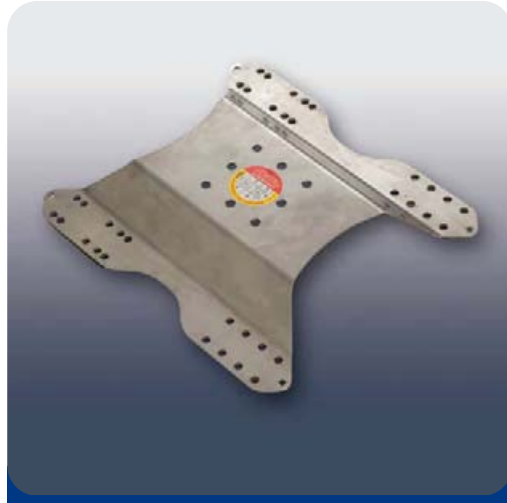
While Standard UNE 795 C does not define the separation distance to be observed when mounting the posts, "NEWTON's" law of gravity is the most likely criterion to be applied for manufacturers when working with their force and deflection spread sheets (The force involved when a person falls can exceed 2 Tons at the anchor tips).

While lines can technically be made with openings greater than 50 meters, in reality, the force exerted in the anchor tips is very big (with the requirement to use energy absorption systems) and deflection in the event of a huge fall, which can exceed 7 meters.

A clear everyday example of this is an arch deflection or a guitar string: no matter how taut the strings are, the centre shifts very easily and effortlessly with only a little force, from exponentially increasing the force at the ends.

The positioning of intermediate anchors in a lifeline is therefore required for technical reasons (reducing external force and decreasing the fall distance) and these are only removed for economic reasons, posing the corresponding threat to the user.

## SR-50 Stainless steel stand mounting in metal roof



### Sample application in sandwich panel

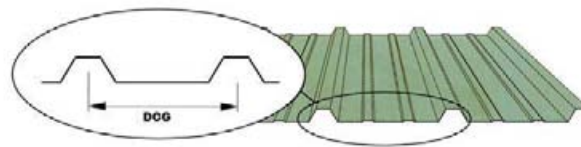
- 1 u. **SR-50** Rivet stand
- 1 u. **A-20** Alu. final anchor
- 4 u. **T-20** Screws
- 16 u. **RE-50** Rivets (for sandwich panel = 0.5 mm)



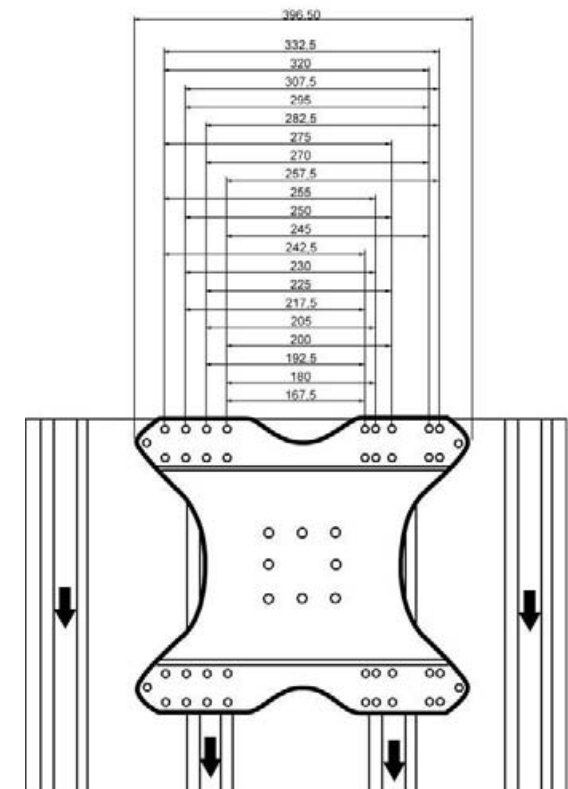
Designed with economic mounting systems in mind, and complying with standard UNE 795 class A and C, with the same cutting edge mounting and waterproofing technology of the PR-50 post.

Made entirely of stainless steel, masterfully combining modern features with a sleek and proportioned outline, allowing the positioning of lifelines on metal roofs quickly, safely and easily without having to cut the corrugated sheets or panels for mounting onto the supporting structure. The height of the SR-50 stand, standing at only 60 mm, reduces the visual impact of the lifeline and reduces the bending torque that occurs on the roofs during a fall, protecting the roof itself.

### Distances between centres of fret pattern



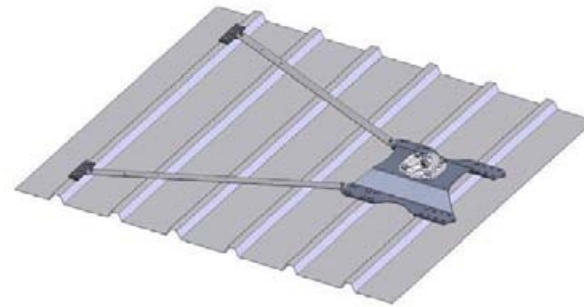
Detail EPDM waterproofing



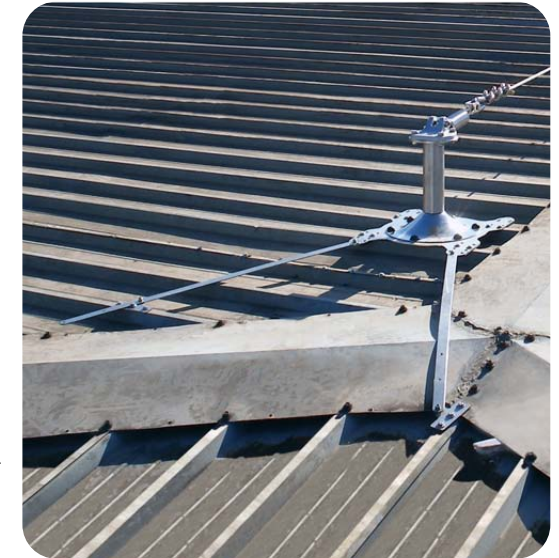
Identical dimensions for PR50



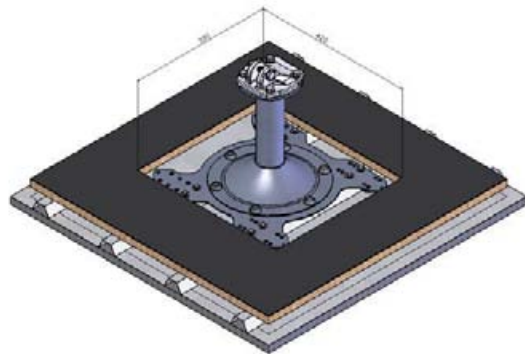
## ARM-50 Reinforcement arms for metal roofs



Manufactured in stainless steel, measuring 750 mm long, with adjustable lengths and angles, the ARM 50 arms connected to the PR 50 posts or SR 50 stands allow the mounting points and the forces to be distributed across several different plates. The use of the reinforcement arms for metal roofs does take away from the requirement to check the correct installation of the sheets to the supporting structure before positioning the lifeline.

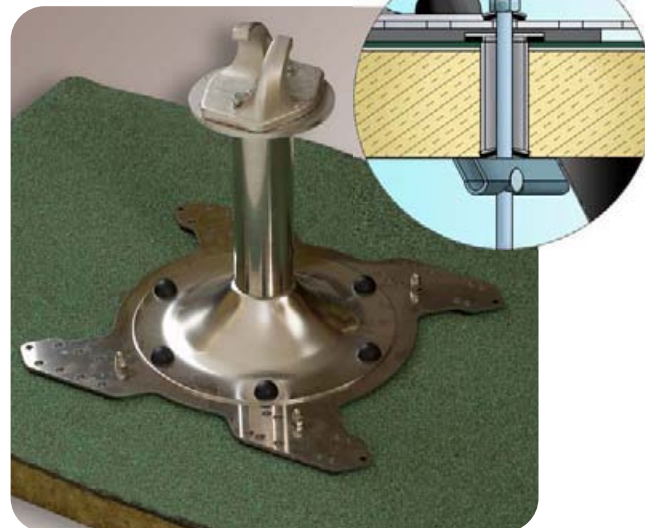


## Deck roofs



Direct mounting to metal with RE50 rivets

Detail of overlaying mounting with compression tube and rocker arm bolt



## Set-50 for RE50 rivets

Set of tools for RE-50 installation

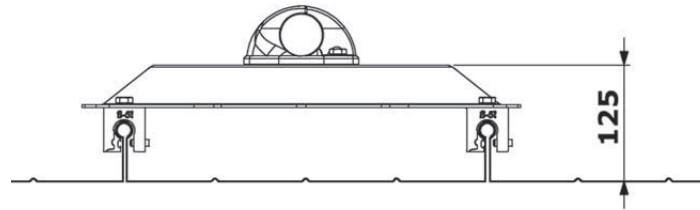


## Set-55 for RE55

Set of tools for RE-55 installation

# Mounting for standing seam roofing

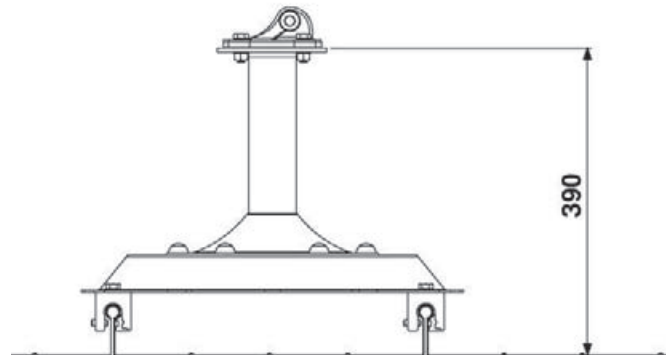
## SR-60 STAINLESS STEEL stand for mounting onto standing seam roof ribs



The most economical and reliable mounting system on standing seam roofs without the need for expensive drilling and waterproofing, continuing to guarantee the sealing of the roof. Suitable for a range of materials such as steel, aluminium, copper, zinc, etc.

Choosing the most appropriate cleats for the roof profile and indicating the separation between DCJ nerves (mm) will let us know the most appropriate SR60 stand model for your roof

## PR-60 STAINLESS STEEL deformable post for mounting onto standing seam roof ribs

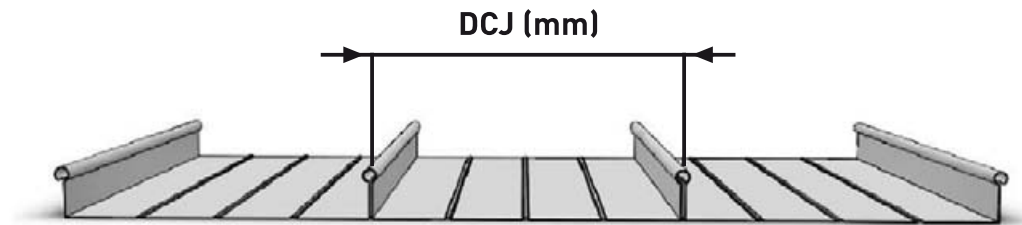


The increased height of the lifeline on the roof makes it more comfortable to use and allows larger openings for installation of the anchors.

# Mounting for standing seam roofing

Standing seam roofs are composed of a series of metal trays (steel, aluminium, zinc, etc.) bracketed together and characterized by the absence of either an auger or perforation in the entire surface, thus guaranteeing sealing. That is why IGENA has developed **a mounting system mechanical cleats that directly attach to the gasket** that does not alter the characteristics of the roof and ensures sealing.

This must provide the DCJ (joint spacing) and the dimensions of the joint profile to select the most appropriate mounting.



**GR-10**  
Aluminium cleat standing  
seam for Round Point

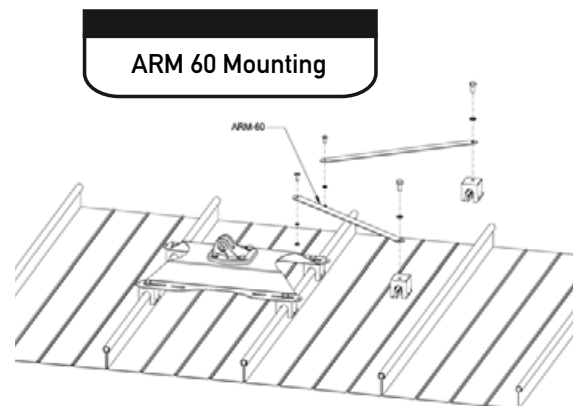


**GR-20**  
Aluminium cleat standing  
seam for flat clamp



There are a range of profiles of standing seam pre-cased roofs. The correct mounting cleat must be used for each model.

## ARM-60 Reinforcement arms in standing seam roofs



In certain cases, the anchor tips or the corners of the lifelines need to be reinforced with a reinforcement arm. These arms better distribute the force of a fall over a larger roof surface. The separation between the roof joints must be indicated for the correct choice of arm length

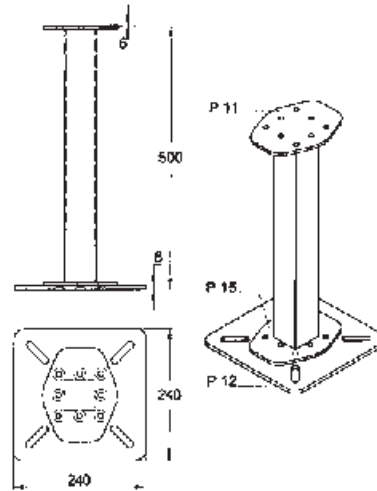


# Stainless steel **post** mounting anchors

**MULTI**  
compatible

with ALL anchors  
including 2 eyebolts  
concurrently  
(FA10 / FX10)

## P-10 Stainless steel posts mounted into the floor

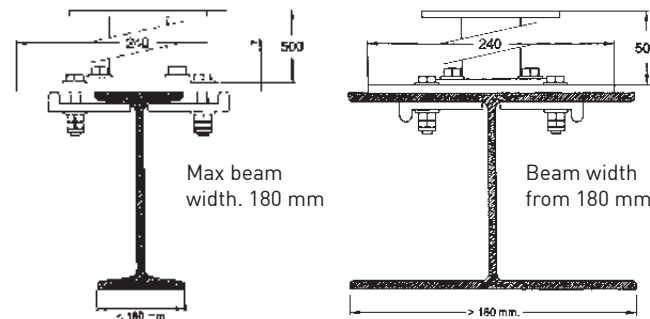


### Application example

- 1 u. P-10 Standard post
- 1 u. X-10 Stainless steel anchor tip
- 4 u. T-20 Screws
- 4 u. T-100 12 metric chemical bolt



## P-20 Stainless steel plate mounted onto a beam with tabs



### Application example

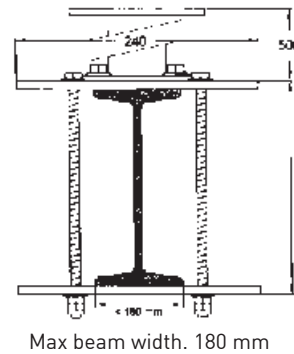
- 1 u. P-20 Mounting of plate with tabs
- 1 u. X-10 Stainless steel anchor tip
- 4 u. T-20 Screws





# Stainless steel **post** mounting anchors

## P-30 Stainless steel post mounted onto beam with bracket

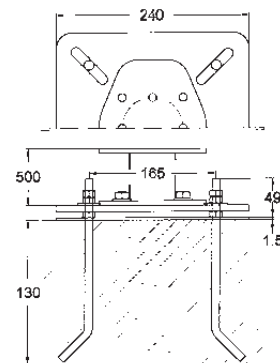


### Application example

- 1 u. P-30 Bracket mounting plate
- 1 u. X-30 Stainless steel buffer
- 4 u. T-20 Screws



## P-40 Stainless steel post mounted to the floor using adjustable bolts to insert into concrete



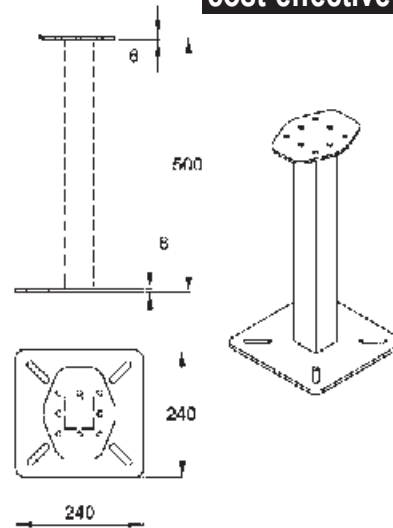
### Application example

- 1 u. P-40 Adjustable bolt post
- 1 u. X-10 Stainless steel anchor tip
- 4 u. T-20 Screws



# Anchor mounted galvanised posts

## PG-10 Galvanised post mounted to the floor

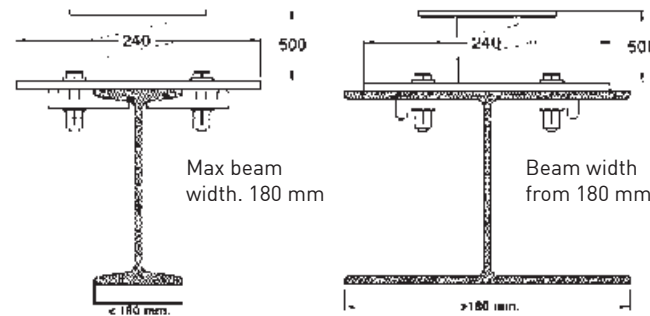


### Application example

- 1 u. PG-10 500 mm galvanised post
- 1 u. X-20 Stainless steel intermediate anchor
- 4 u. T-20 Screws
- 4 u. T-100 12 metric chemical bolt



## PG-20 Galvanised post mounted onto a beam with tabs



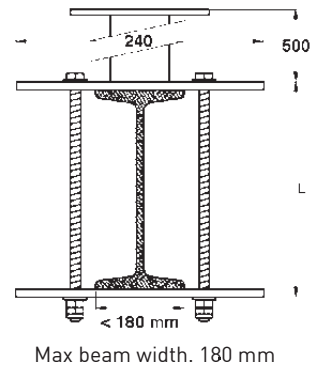
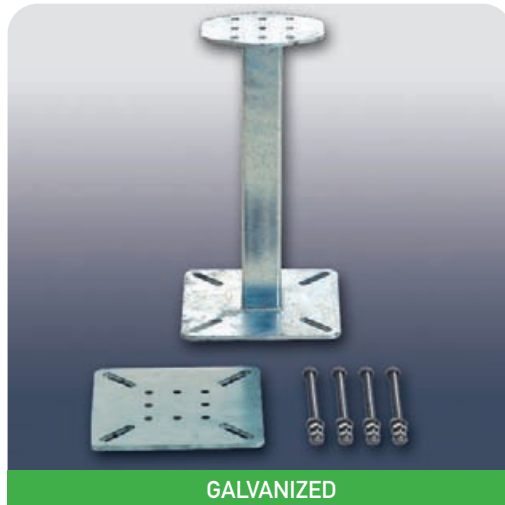
### Application example

- 1 u. PG-20 Mounting of plate with tabs
- 1 u. A-20 Stainless steel intermediate anchor
- 4 u. T-20 Screws



# Anchor mounted galvanised posts

## PG-30 Galvanised post mounted onto a beam with bracket



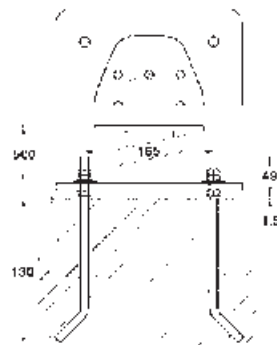
### Application example

- 1 u. PG-30 Galvanised post mounted with bracket
- 1 u. A-10 Aluminium anchor tip
- 4 u. T-20 Screws

Stainless steel screw (idem P-30)



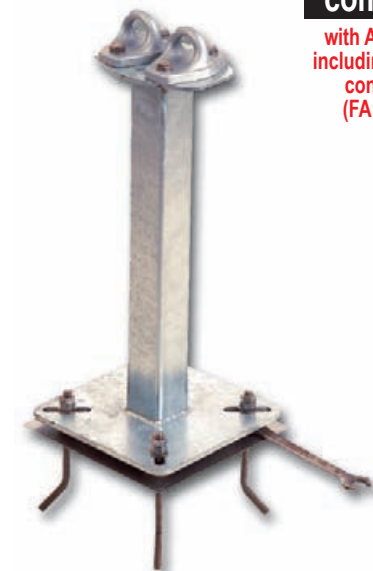
## PG-40 Galvanised post mounted to the floor using adjustable bolts to insert into concrete



### Application example

- 1 u. PG-40 Adjustable bolt post
- 1 u. FA-10 Aluminium eyebolt
- 4 u. T-20 Screws

Stainless steel screws and bolt accessories (idem P-40)



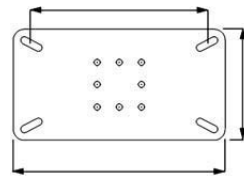
**MULTI**  
compatible  
with ALL anchors  
including 2 eyebolts  
concurrently  
(FA10 / FX10)

# Special stainless steel plates and posts

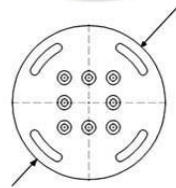
We manufacture all types of supports to order. Quick processing of orders.



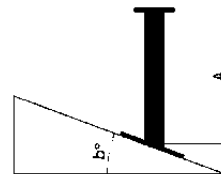
LV tip cable-stayed post.  
(more than 1000 mm)



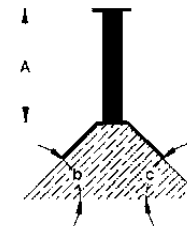
**BA-10 plate** special widths to  
order. (Indicate beam size)



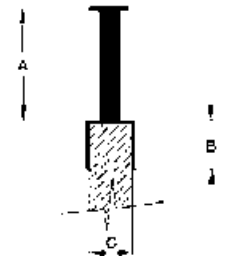
**BA-10 plate** special circular  
mounting in wall



**Model P-10/SBI**  
Special tilted base stainless steel post



**Model P-10/S2A**  
Special stainless steel post on  
2-slant roof

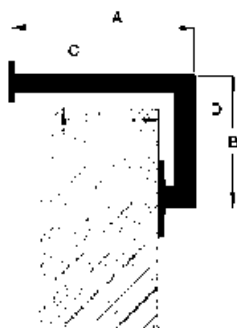


**Model P-10/SM**  
Special stainless steel post mounted  
to the wall

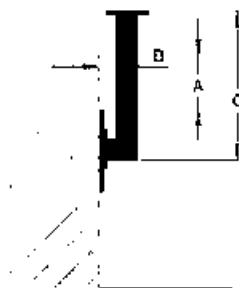


# Special stainless steel **plates and posts**

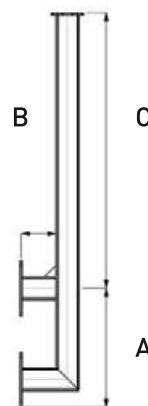
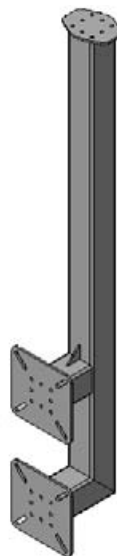
Exclusive manufacture of special stainless steel posts.  
A minimum order required for special galvanized steel posts.



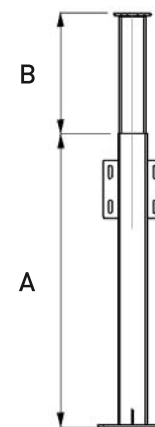
**Model P-10/SU**  
Special U stainless steel post



**Model P-10/SL**  
Special lateral stainless steel post



**Model P-10/SLL**  
Mounting of post on vertical wall



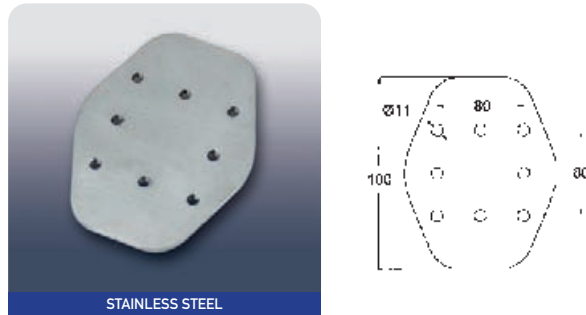
**Model P-10/S2A**  
Special stainless steel post over  
2-slant roof



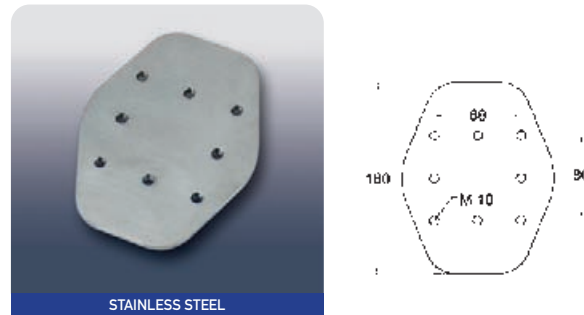
**Application example**  
Special plates for mounting on  
circular pillars.

# Stainless steel post parts

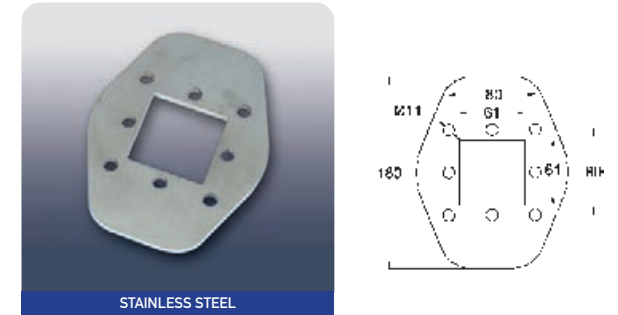
**P-11** 6 mm stainless steel standard support plate



**P-13** 100 x 100 mm post column lower support 8 mm stainless steel threaded plate



**P-15** 60 x 60 mm post column lower support 8 mm stainless steel plate



**P-17** 100 x 100 mm post column upper support 8 mm stainless steel threaded plate



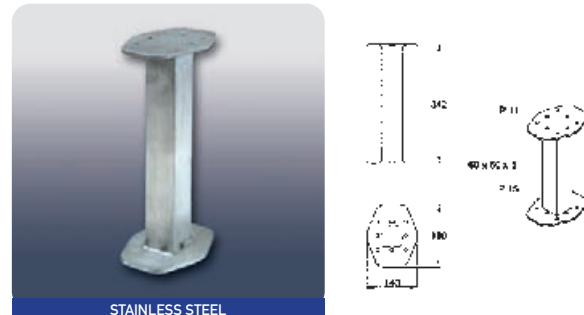
**P-21** 8 mm stainless steel tab mounting plate (2 units)



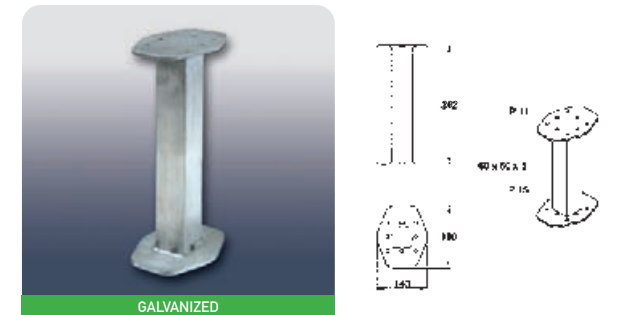
**P-500** 500 mm post stainless steel column



**P-350** 350 mm post stainless steel column



**PG-300** 300 mm post galvanised column



# Mountings | Screws | Bolts | Rivets

## Stainless steel screw

### T-10 Stainless steel screw mounting anchors and eyebolts to base plate



Supplied in bag of 4 units for BA-10, BA-20, BA-30, BA-40, BC-10, BC-20 and BC-30.

### T-20 Stainless steel screw mounting anchors and eyebolts to post support



Supplied in bag of 4 units for P-10, P-20, P-30, P-40, P-11, PG-10, PG-20, PG-30, PG-40, PR-50 and SR-50.

### T-30 Stainless steel screw mounting anchors and eyebolts to welded plate



Supplied in bag of 4 units for PS-14, PS-16, AD-10, P-13 and P-17.

### T-35 Stainless steel screw mounting post column for welded plates



Supplied in bag of 8 units for mounting of P-500, P-350 post column and PG-300 to PS-14 plates.

## M12 stainless steel mounting bolts

### T-500 M-12 stainless steel chemical bolts



M12 Resin cartridge+wire mesh+Threaded rod set 316 stainless steel for BA-10, P-10, PG-10, BC-10, BC-20, BG-10 and BG-50. Sold in a set of 10 units.

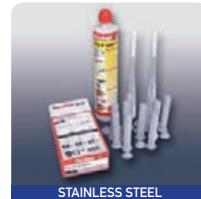
### T-300 M-12 stainless steel metal bolt



Sold per unit for BA-10 and BC-20 plates and P-10 and PG-10 posts.

## M10 stainless steel mounting bolts

### T-400 M-10 stainless steel chemical bolt



M10 Resin cartridge+wire mesh+Threaded rod set 316 stainless steel for all anchor and eyebolt models. Sold in a set of 10 units.

### T-200 M-10 stainless steel metal bolt



Sold per unit for all anchor and eyebolt models.

## Mounting for metal roofs

### RE-50 "Flower" rivets



Supplied in bags of 8 units for PR-50 and SR-50 0.6 mm metal sheet and 16 units for sandwich panel. (sheet = 0.5 mm)

### RE-55 Rocker arm bolt to superimpose on deck roofs



For mounting on Deck roofs, with SR-50 stand systems superimposed onto the roof.

### GR-10 Aluminium cleat standing seam for Round Point



For PR-60 post and SR-60 stand (i.e. KALZIP, BEMO).

### GR-20 Aluminium cleat standing seam flat clamp



For PR-60 post and SR-60 stand (clamp joint).

## Tools

### BRK-10 Semi-automatic riveting



Lever riveted multi-dimensional device. Manual screwing and unscrewing of adaptable nut using operating lever. Course adjustment using knurled top.

### RK-M6 6 metric rivet outlet replacement



### SET-50 For RE-50 rivets



Tool set for positioning of RE-50.

### SET-55 For RE-55 rivets



Set of tools for positioning of RE-55.

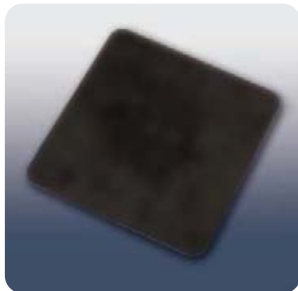
# Waterproofing

## E-10 Neoprene sealing parts



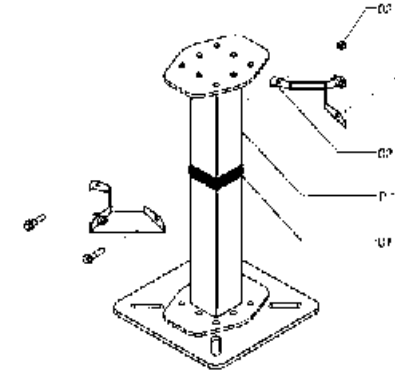
3 mm neoprene sealing for all models and PS-14 support plate.

## E-20 Neoprene seal plates and posts



3mm neoprene sealing BA-10 base plates and P-10 and PG-10 posts.

## E-30 60x60 mm standard post sealing stainless steel roofing



### Application example

1 u. E-30 Stainless steel roofing  
1 u. P-10 Standard post



# Signage

## S-10 Signage plate

210 x 150 mm obligatory plate Includes engraving of manufacturing serial number .



# Seals

## S-20 Numbered security seal



Seal to prevent tampering of tensioner. Includes engraving of manufacturing serial number. Set of 2 units.

## S-21 METALLIC numbered security seal (personalised)



Manufactured in 200m long stainless steel cable. Installation via both tensioner nuts. 2 units.



# PPE Personal Protection Equipment

Safety accessories approved for use in safety cables (lifelines) and eyebolts.  
Descenders and rescue equipment also available. Personalised study according to requirements.

## EPI-10 Safety harness with rear anchor



approved according to  
standard EN 361

## EPI-20 Safety harness with rear and pectoral anchor



approved according to  
standard EN 361

## EPI-30 1m energy absorber

Approved according to standard EN 355.  
1m Ø 12 mm anchor cord system  
with energy absorber and 10 mm  
carabiners.



## EPI-40 2m energy absorber

Approved according to standard EN 355.  
2 m Ø 12 mm anchor cord system with  
energy absorber and 10 mm carabiners.



## EPI-50 Helmet

Light, well ventilated and comfortable helmet.  
Its design has been studied comprehensively to  
protect not only the head but also the frontal,  
temporary and occipital elements.  
Approval: EN 397 / Weight: 410 g.



## EPI-60 carabiner

Symmetrical carabiner with continuous  
bending radius. Glides well along cables,  
anchors and other tools.  
Approval: EN 3662



## EPI-70 Retractable block

Cable and tape model in a range of lengths.  
Approval: EN 360.



## EPI-80 Installation set

Range of lengths (5 to 25 mm).  
Approval EN 353-2.



## EPI-90 L.V. Textile

20 m length.  
Approval: EN 795 B.



# Presentation

---

## PUB-40

---



80 x 80 cm Box

## PUB-50

---



120 x 80 cm Box  
— European pallet —



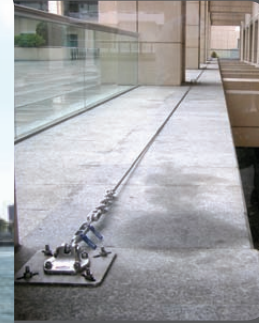
Work carried out



Agbar Tower (Barcelona)



World Trade Center (Barcelona)



Auto d'Ara (Mataró)



Tiled roof



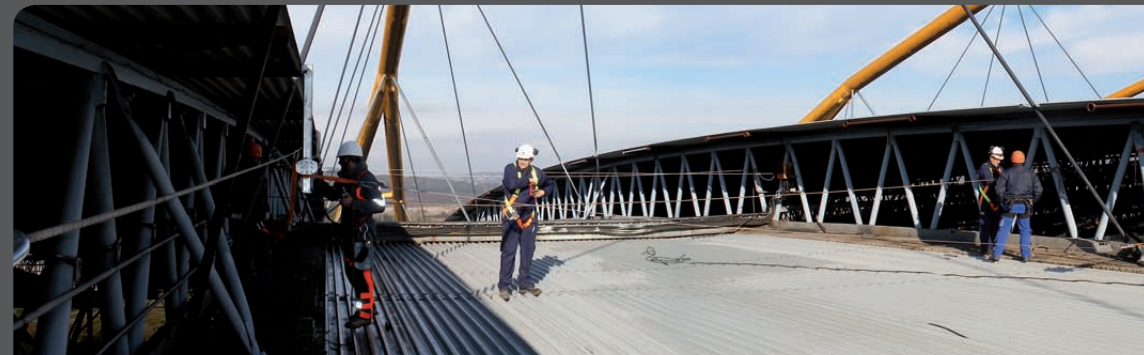
Sabadell Bank [Banc Sabadell]



Tower line and ladder



Waste water tank. SADA (Lleida)



Endesa Roofing





Fira 2 (Barcelona)



Andorra roofing



Parc Ciutadella



Terrassa Market (Terrassa)



Auditorium (Zaragoza)



Corrugated sheet roof



Born Market (Barcelona)



Barcelona Princess Hotel (Barcelona)



Kursaal (San Sebastian)



Congress Centre (Málaga)



S.C. La Maquinista (Barcelona)



Barcelona Fira Montjuïc I



Procter & Gamble (Mataró)



S. C. Xanadú (Madrid)



Service Stations Repsol



Aquarium (Barcelona)





Let us guide you at:

[www.igena.com](http://www.igena.com)



Rafael Riera Prats, 61 | 08339 Vilassar de Dalt  
Barcelona - SPAIN

Tel. +34 937 531 711  
Fax +34 937 533 159

[www.igena.com](http://www.igena.com)



NEW FAST SYSTEM  
CATALOGUE



VERTICAL  
LIFELINES

