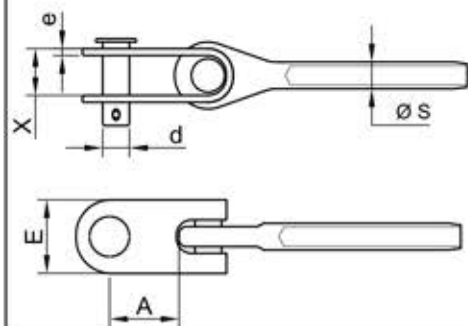
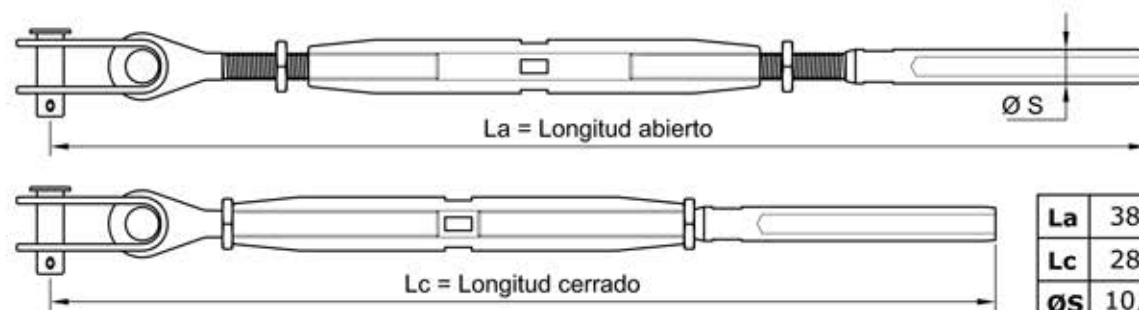


HORQUILLA MÓVIL ECA 60



| | |
|-----------|------|
| A | 25 |
| E | 28 |
| X | 11 |
| e | 3 |
| d | 10 |
| ØS | 10,8 |

TENSOR HORQUILLA MÓVIL RCS 60



| | |
|-----------|------|
| La | 380 |
| Lc | 285 |
| ØS | 10,8 |

CABLE INOXIDABLE 316

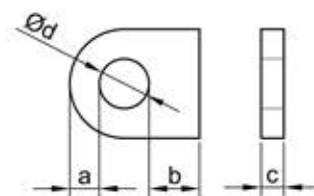


7 x 19



| | |
|--------------------------|----------|
| Cable Ø | 6 |
| Carga rotura (Kg) | 1.920 |
| Composición | 7x19 |
| Calidad | AISI 316 |
| Límite elástico | 60 % |

DIMENSIONADO DEL PUNTO DE ANCLAJE



| | Min | Max |
|----------|-----|-----|
| a | 11 | 17 |
| b | 15 | X |
| c | 6 | 10 |
| d | 11 | X |

IGENA, S.A.

Tel : 93 753 17 11
Fax : 93 753 31 59

HORQUILLA MÓVIL
TENSOR DE HORQUILLA MÓVIL

ECA 60 - RCS 60



Cotas en mm

Plano D03